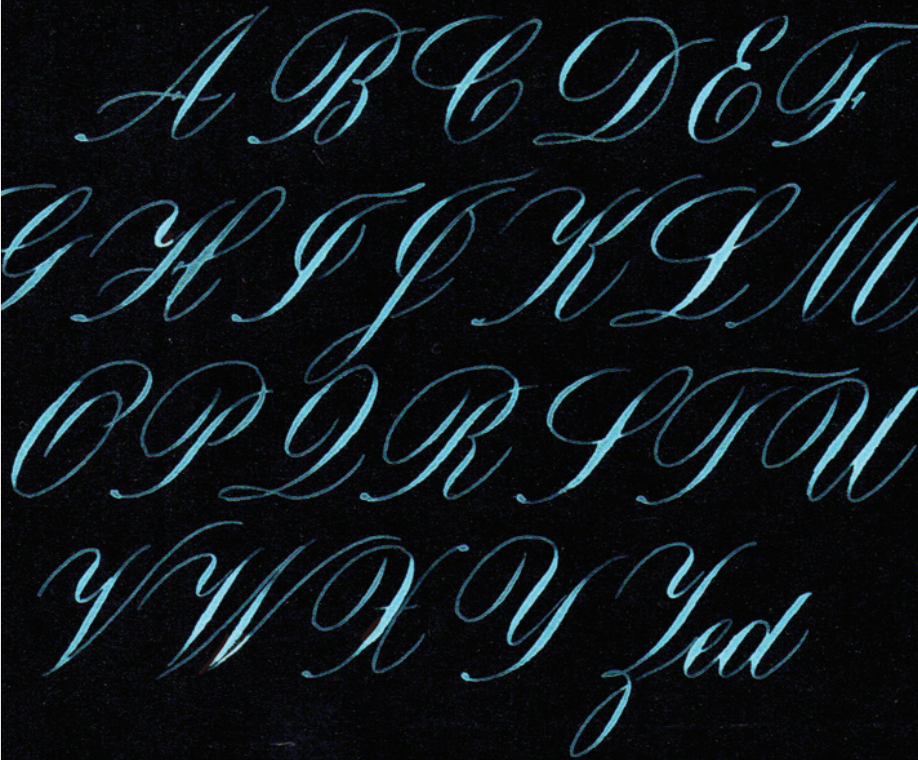




Introduction to Copperplate: Majuscules

1-day workshop with
NINA TRAN

**WHERE:**

PVAA
2031 Montclair Plaza Lane,
Montclair, CA 91763
(2nd Floor, next to Nordstrom)

WHEN:

Sat. May 18, 2019
9:30 AM - 4:30 PM

COST:

Check: \$60, Payable to IE/PV Sfc

PayPal: (Fees may apply)

<http://cpnl4.ntwd.net/~societyforcallig/calendarDetail.php?eventID=1266>

ABOUT NINA

Nina Tran is a mom to 3 energetic kids in the San Fernando Valley. She has been practicing and promoting calligraphy and penmanship since 2015. While she is still and will always be a student, she is passionate and enthusiastic about sharing and teaching her growing knowledge of the pointed pen. Her main focuses of study are Copperplate Script, Spencerian Script, and Gothicized Italic. She enjoys morning walks, reading, and knitting.

INSTAGRAM: @anintran

ABOUT THE WORKSHOP

Join us for a day of deconstructing and understanding Copperplate majuscules!

What is Copperplate? Copperplate is a generic term for a classic script characterized by contrasting thick and thin strokes. It is a pointed pen script that evolved from a handwriting system developed in the mid 17th century called English Roundhand. The script that we will learn is based on the Zanerian Manual's Engrosser's Script.

In this class, we'll unravel the key concepts, fundamental strokes, consistency drills, and how to build up letters, stroke-by-stroke

Workshop is limited to 15 participants. Enrollment is for current paid Society for Calligraphy members only. Your membership must be current at time of sign-up as well as when class is held. No reservation will be held until your dues are current. If your membership lapses, you become ineligible and your space will be filled from the waiting list. Sign-ups are accepted in advance on a first come, first served basis. No refunds unless your place can be filled from a wait list. If you must cancel, please do so early enough for your place to be filled. For confirmation and prompt receipt of supply list, we recommend that your check arrive no later than two weeks before the workshop. You do not have a spot in the workshop until you are notified by the coordinator.

Please send this tear-off with:

1. Your check payable to IE/PV Sfc
2. If you do not have email, you must include a stamped, self-addressed business size envelope to: Angie Elliott, 3030 Cimarron Road, Riverside, CA 92506.

Questions? E-mail **Angie** at InlandEmpire@societyforcalligraphy.org or **951-505-1888**. NO audio or video recording of any program, meeting, workshop or other Sfc function permitted without prior consent of both guest artist and a representative of the Board of Governors.

*** You must ask permission of the artist/ instructor to photograph any copyrighted materials, including demos.

www.societyforcalligraphy.org

Send this tear-off with check to: Angie Elliott, 3030 Cimarron Road, Riverside, CA 92506

SOCIETY FOR CALLIGRAPHY WORKSHOP

Nina Tran • Copperplate Script Majuscules
Sat. May 18, 2019
Enclose your check for \$60, payable to IE/PV Sfc

- I am a paid, current member of the Sfc, \$60 enclosed
- I am not a paid, current member of the Sfc
(Please enclose a separate \$42 Membership check payable to Sfc. Download membership form at www.societyforcalligraphy.org and you must include it with your check.)
- Please send my supply list via Email
- Please send my supply list by US Mail - I have enclosed a #10 SASE

NAME EMAIL:

ADDRESS

CITY / STATE: ZIP: PHONE: